

*Learn the*  
**TRUE COST.**

---

*Know the*  
**TRUE VALUE.**

Merit scholarships,  
need-based financial aid  
and the endless benefits  
of the Berry education.





**BERRY WAS  
FOUNDED ON THE  
IDEA THAT LEARNING  
WORKS BEST AS A  
SHARED COMMITMENT.**

It is our  
**ENDURING MISSION**  
to partner with  
students and families to  
make the Berry education  
— and its lifelong value —  
possible.

## TAKE A DIFFERENT APPROACH.

*Get different results.*

Since 1902, the Berry education has balanced intellectual exploration, hands-on experience and character development.

### POWERFUL PROGRAMS

Led by expert, hands-on professors, each of Berry's **75+ AREAS OF STUDY** offers intellectual flexibility and professional readiness.

### COMMUNITY OF MENTORS

Students are supported, transformed and stretched by daily guidance from **PROFESSORS, ADVISORS, COACHES, ALUMNI** and **PEERS**.

### CONSISTENT RESULTS

Berry graduates are **CONFIDENT, ADAPTABLE CITIZENS OF INTELLECT, EXPERIENCE** and **CHARACTER**. This education distinguishes their lives and careers.

### CAREER PREPARATION

Berry students earn up to **EIGHT SEMESTERS OF PAID PROFESSIONAL DEVELOPMENT EXPERIENCE** through our LifeWorks program.



**100%** of first-year students **ARE ASSIGNED A FIRST-YEAR MENTOR AND A FACULTY OR STAFF MENTOR** to help ease their transition to college, academically and personally.

Admitted to professional schools:

**MEDICINE: 86%**

**LAW: 100%**

**VETERINARY: 80%**

Statistics accurate as of 5/20/2024

BC#229\_22-23/12K

## DESIGN A LIFE.

*Practice along the path.*

At Berry, education is a series of guided four-year learning experiences. With help from mentors, students realize their academic and professional goals and align them with personal commitments.

### OK! WHAT'S MY PART IN ALL THIS?

As explained over there to the left, **the Berry education unlocks a lifetime of opportunity and benefit**. It's worth every penny — the best investment you (and your family) can make toward your future.

### AND HOW DOES BERRY HELP?

- ◆ We offer **merit scholarships** that attract (and reward) the talented, hardworking students that make this community great.
- ◆ We provide **need-based financial aid** to support students whose families can't cover full costs.
- ◆ We offer **payment plans** that let families spread college costs throughout the academic year.
- ◆ Fueled by the generosity of Berry alumni, **our endowment keeps tuition in check**. Compare the cost of Berry to that of other liberal arts colleges, and you'll see we're also doing our part by keeping your costs as low as possible.

### BUT STATE SCHOOLS ARE CHEAPER!

Maybe at first glance, but the close personal attention you'll receive at Berry means you're much more likely to graduate in four years — and less likely to face five or six years of tuition as you might elsewhere. **Only 35% of students graduate from public universities in four years; that's nearly half of the rate of Berry students.** Why is this? Small classes. A year-by-year plan for academic support and life after college that you and your advisor develop together. A community of mentors to guide, inspire and help you when you need it.

We offer (so many) scholarships that recognize and reward students with specific abilities, interests, backgrounds and experiences — including **FUNDING FOR EXCEPTIONAL SCHOLARS, SCHOOL AND COMMUNITY LEADERS, MUSICIANS, ACTORS, WRITERS AND HUMANITARIANS** (among others). This helps give the most talented students extra incentive to consider Berry. Which is good for our entire community.

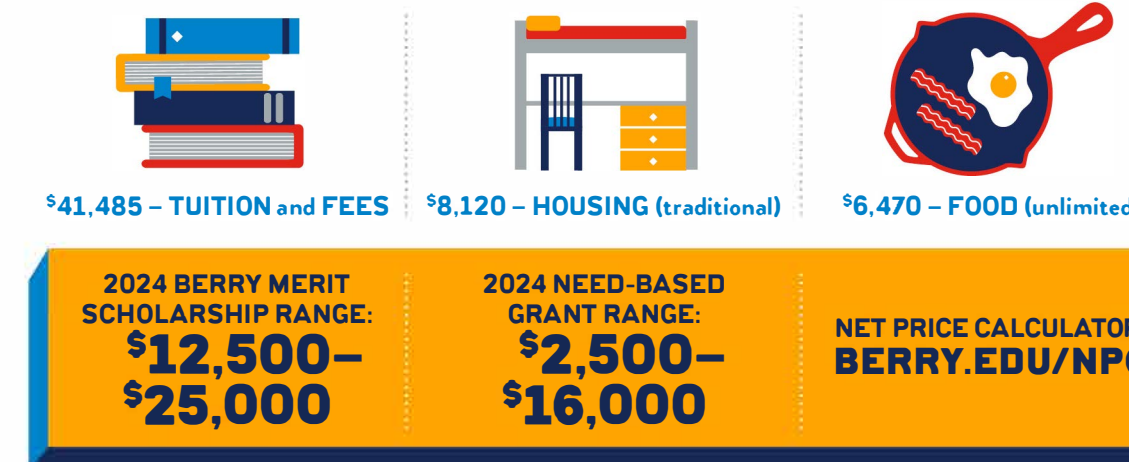


## COMPARE COSTS.

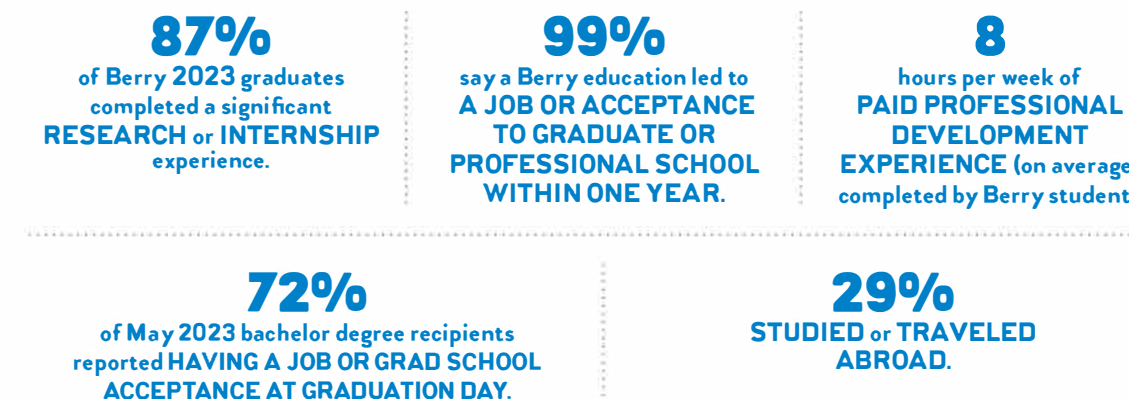
*But also results.*

When considering colleges and universities, be sure to look beyond costs at the *other* set of numbers that matter (what you get for your investment).

### YOUR INVESTMENT Figures for 2024-2025



### THE LASTING VALUE



## OUR COMMITMENT TO MAKING THE BERRY EDUCATION ACCESSIBLE TO STUDENTS FROM ALL INCOME LEVELS AND FAMILY SITUATIONS.

IN ADDITION TO BERRY'S GENEROUS MERIT SCHOLARSHIPS AND NEED-BASED AID:

**33%** of entering Berry students RECEIVED A PELL GRANT.

**96%** of Georgia residents at Berry QUALIFIED FOR A HOPE or ZELL MILLER SCHOLARSHIP.

**71%** of returning Berry students RETAIN THE HOPE SCHOLARSHIP.

**12%** of entering Berry students typically QUALIFY FOR SPECIAL SCHOLARSHIP PROGRAMS THAT MAY MEET FULL NEED.

For a complete list of scholarship and aid opportunities, visit

**BERRY.EDU/AID**

Berry College does not discriminate on the basis of race, creed, color, sex, age, disability, or national or ethnic origin in employment, administration of its educational policies, admissions policies, scholarships and loan programs, and athletic and other college-administered programs.

In compliance with the Jeanne Clery Disclosures of Campus Security Policy and Crime Statistics Act (Clery Act), the Berry College Annual Security and Fire Safety Report is available at [berry.edu/CampusSafetyReport](http://berry.edu/CampusSafetyReport).

What's next?

1

**APPLY TO BERRY**

Early Action: November 1  
Regular Decision: January 15

**BERRY.EDU/APPLY**

2

**APPLY FOR FINANCIAL AID**

The FAFSA will be available in October. For maximum consideration for financial aid, please complete the FAFSA by February 15. (Berry's code is 001554).

**BERRY.EDU/AID**



**BERRY COLLEGE**

2277 Martha Berry Hwy NW  
PO Box 490159  
Mount Berry, GA 30149-0159  
1.800.BERRY.GA (Toll Free)  
706.236.2215

**BERRY.EDU**